

This right of way map when recorded is an instrument of conveyance, transferring in accordance with the Florida Statutes 337.29 (1977) all right, title, and interest of the Florida Department of Transportation in the road, street, highway, set forth on this map to Martin County.

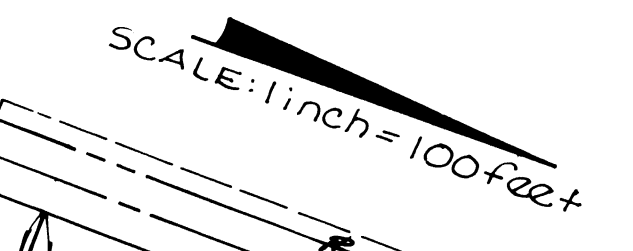
Recorded in Public Records of Martin County, Florida, this day of \_\_\_\_\_, A.D. 2009, in Road Plat Book \_\_\_\_\_, Page \_\_\_\_\_.

Clerk of the Circuit Court  
Martin County, Florida

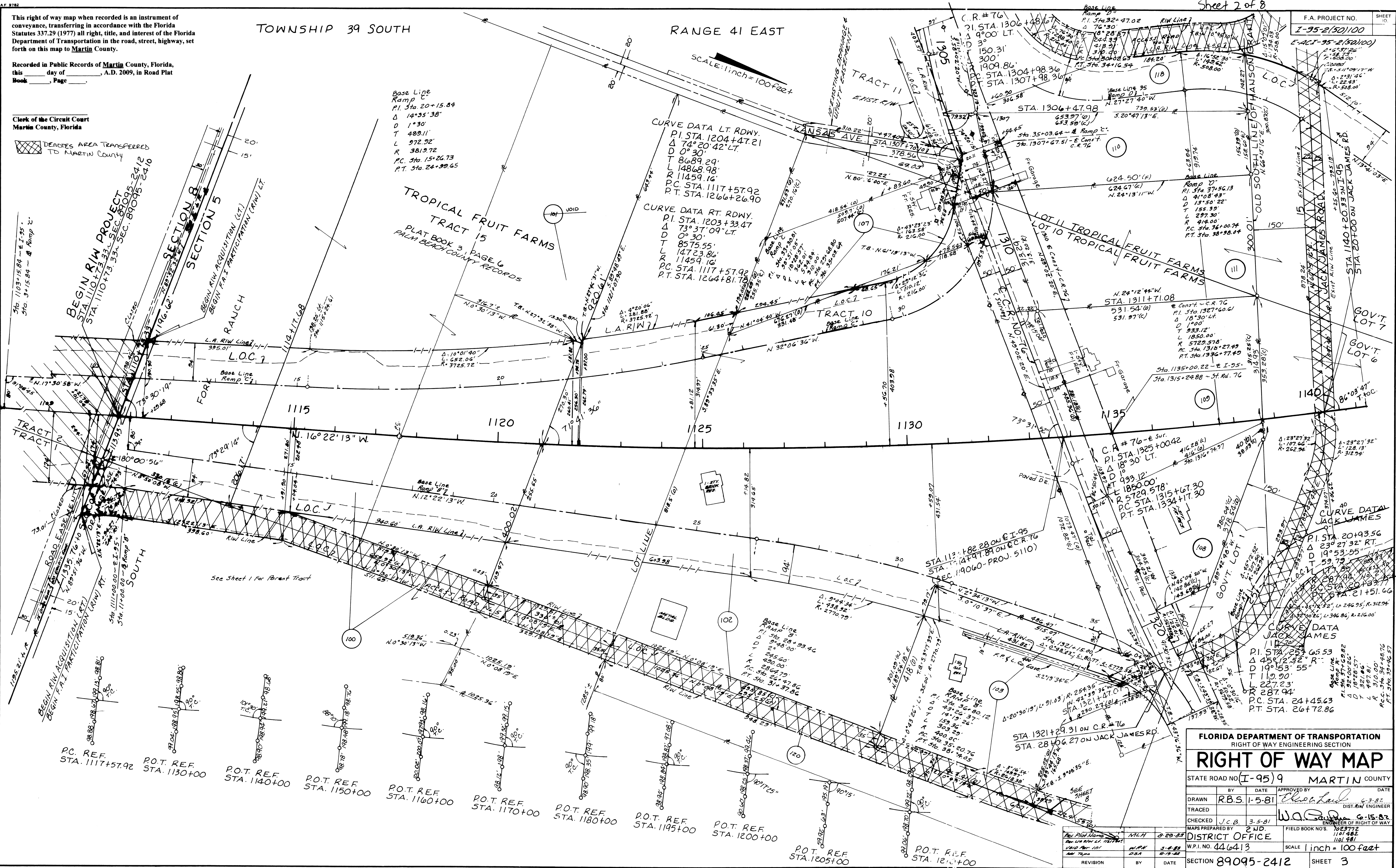
Denotes Area Transferred  
to Martin County

TOWNSHIP 39 SOUTH

RANGE 41 EAST



F.A. PROJECT NO.  
I-95-2/50/100  
E-Act-95-2/50/100



Base Line  
Ramp C  
P.I. Sta. 20+15.84  
Δ 14°35'38"  
D 1°30'  
T 489.11'  
L 972.92'  
R 3812.72'  
P.C. Sta. 15+24.73  
P.T. Sta. 24+39.65

CURVE DATA LT. RDWY.  
P.I. STA. 1204+47.21  
Δ 74°20'42" LT.  
D 0°30'  
T 8689.29'  
L 14868.98'  
R 11459.16'  
P.C. STA. 1117+57.92  
P.T. STA. 1264+26.90

CURVE DATA RT. RDWY.  
P.I. STA. 1203+33.47  
Δ 73°37'09" LT.  
D 0°30'  
T 8575.55'  
L 14723.86'  
R 11459.16'  
P.C. STA. 1117+57.92  
P.T. STA. 1264+81.78

**FLORIDA DEPARTMENT OF TRANSPORTATION**  
RIGHT OF WAY ENGINEERING SECTION

## RIGHT OF WAY MAP

STATE ROAD NO. I-95/9 MARTIN COUNTY

DRAWN	R.B.S.	DATE	1-5-81	APPROVED BY	<i>[Signature]</i>	DATE	6-3-82
TRACED							DIST. ENGR.
CHECKED	J.C.B.	DATE	3-5-81		<i>[Signature]</i>	DATE	6-15-82
MAPS PREPARED BY	J.M.D.						ENGINEER OF RIGHT OF WAY
DISTRICT OFFICE							FIELD BOOK NO. 1101482
W.P.I. NO.	446413						SCALE 1 inch = 100 feet
SECTION	89095-2412						SHEET 3

POLYTRACE 033